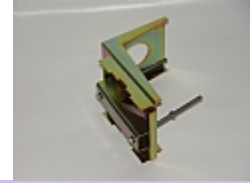


## MT-120019 MOUNTING KIT FOR FLAT PANEL ANTENNA



### CONSTRUCTION

<b>INSTALLATION METHOD</b>	To Pole dia 2 3/4" – 3.5"
<b>AZIMUTH RANGE: COARSE</b>	±180°
<b>AZIMUTH RANGE: FINE</b>	None
<b>TILT RANGE: COARSE</b>	0° to -10°
<b>TILT RANGE: FINE</b>	None
<b>AZIMUTH RESOLUTION STEP</b>	None
<b>TILT RESOLUTION STEP</b>	None
<b>WEIGHT</b>	2.2 kg
<b>PAY LOAD</b>	20 kg (max)

### MATERIALS

<b>BRACKETS</b>	Steel, Zinc Plated per QQ-Z-325 type2 class 1
<b>CLAMPS</b>	Steel, Zinc Plated per QQ-Z-325 type2 class 1
<b>FASTENERS</b>	Steel, Zinc Plated per QQ-Z-325 type2 class 1

[ADD TO COMPARISON](#) | [COMPARE](#)

### ENVIRONMENTAL

<b>TEMPERATURE</b>	-55°C +71°C
<b>VIBRATION</b>	IEC 60721-3-4 4M5 Random
<b>SHOCK MECHANICAL</b>	IEC 60721-3-4 4M5
<b>HUMIDITY</b>	0-100%
<b>ICE LOADING</b>	25 mm Radial
<b>SALT FOG</b>	IEC 68-2-11 Ka, 500h
<b>WIND LOAD (SURVIVAL)</b>	
<b>FRONT THRUST</b>	103.6 kg
<b>SIDE THRUST</b>	8.6 kg
<b>INSTALLATION INSTRUCTION DOCUMENT</b>	RD41184700C

**WAIVER!**

While the information contained in this document has been carefully compiled to the best of our present knowledge, it is not intended as presentation or warranty of any kind on our part regarding the fitness of the products concerned for any particular use or purpose and neither shall any statement contained herein be construed as a recommendation to infringe any industrial property rights or as a license to use any such rights. The fitness of each product for any particular purpose must be checked beforehand with our specialists.



154 State Street North Haven, CT 06473

Toll Free 866.792.0031

[www.gatewayrfidsolutions.com](http://www.gatewayrfidsolutions.com)

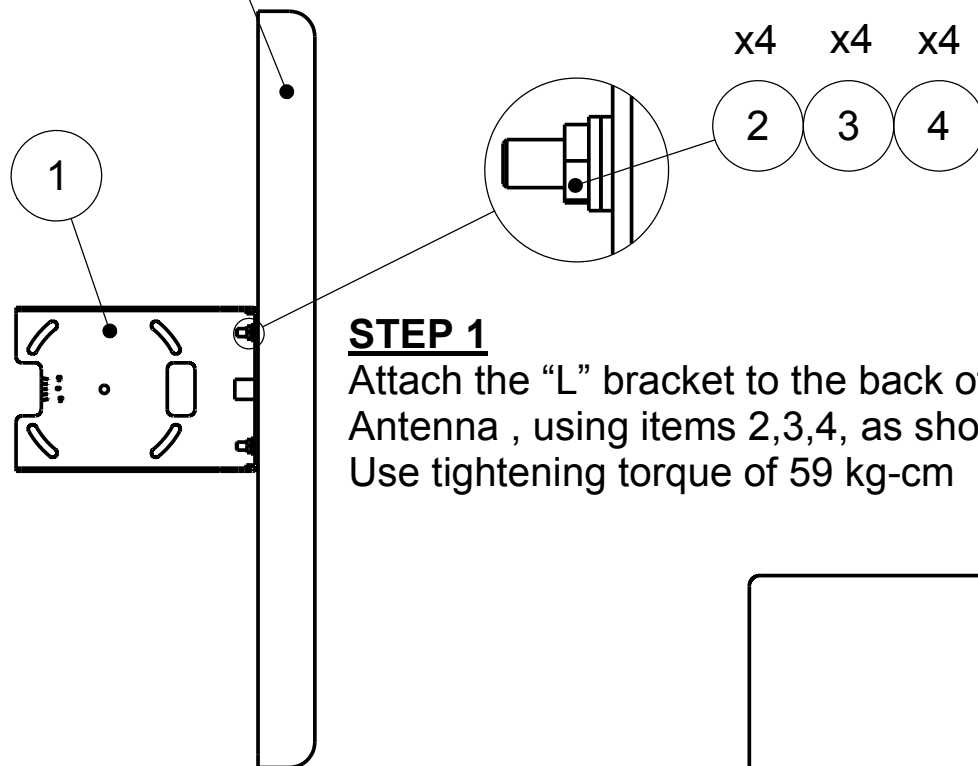
Visit our RFID Store - [store.gatewayrfidsolutions.com](http://store.gatewayrfidsolutions.com)

# Mti

# WIRELESS EDGE

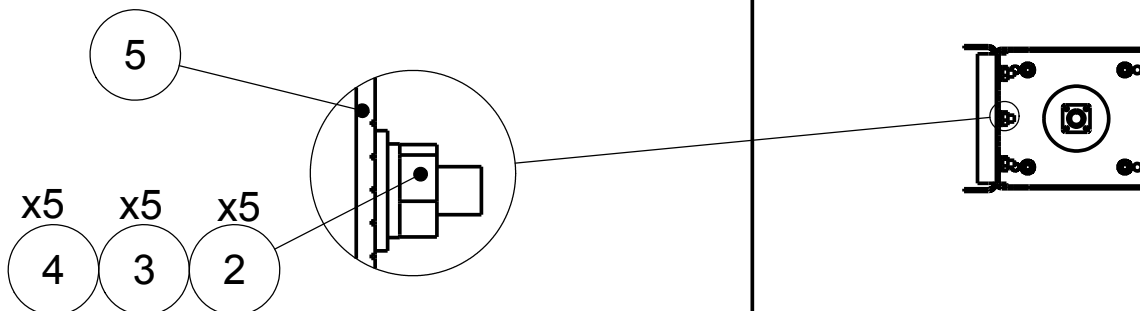
## INSTALLATION INSTRUCTIONS

ANTENNA



### STEP 1

Attach the "L" bracket to the back of the Antenna , using items 2,3,4, as shown .  
Use tightening torque of 59 kg-cm



### STEP 2

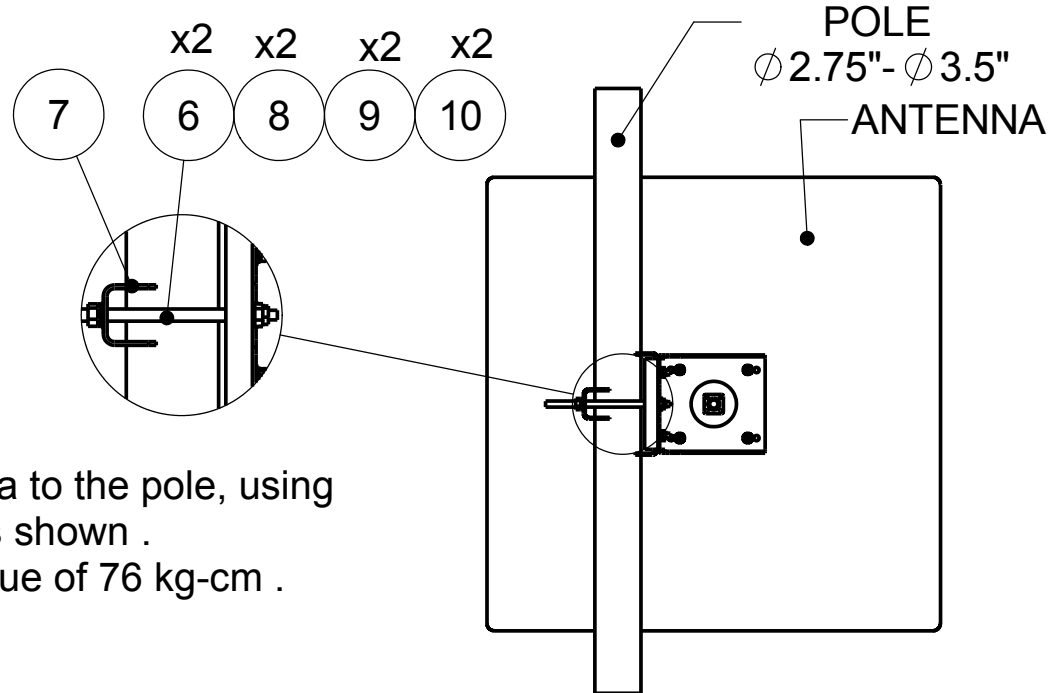
Attach the grooved bracket to the "L" Bracket using items 5,2,3,4 as shown .  
do not fasten the screws!

SHEET 1 OF 2



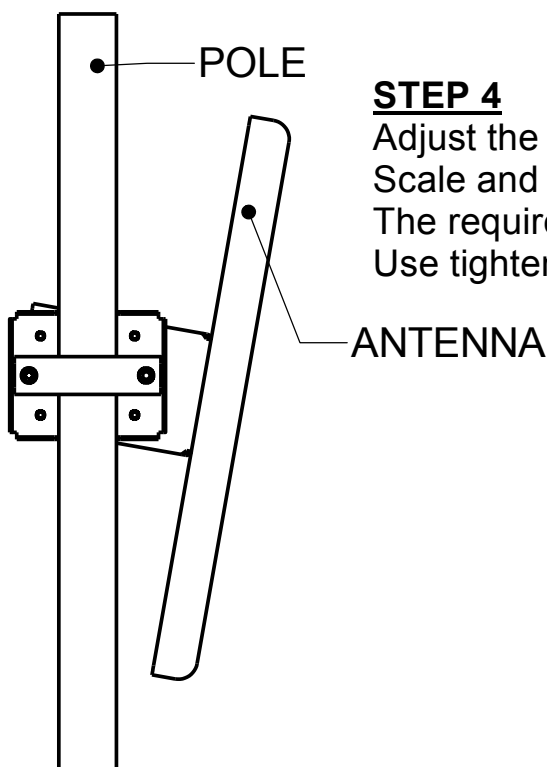
# WIRELESS EDGE

## INSTALLATION INSTRUCTIONS



### STEP 3

Tighten the antenna to the pole, using Items 7,6,8,9,10 as shown .  
Use tightening torque of 76 kg-cm .



### STEP 4

Adjust the required tilt using the angular Scale and fasten all screws and nuts at The required position.  
Use tightening torque of 68 kg-cm .

### Installation Kit

ITEM	DESCRIPTION	QTY
1	ELEVATION BRACKET	1
2	WASHER FLAT 1/4"	9
3	WASHER SPRING 1/4"	9
4	NUT 1/4"	9
5	POLE BRACKET MECH ASSY	1
6	BOLT CARRIAGE 5/16"x6" STEEL	2
7	U BRACKET	1
8	WASHER FLAT 5/16" STEEL	2
9	WASHER SPRING 5/16" STEEL	2
10	NUT HEX 5/16" STEEL	2

SHEET 2 OF 2